

# 2025




# CLIENT BROCHURE


Coaching is our love language




*Cd*

THE CAREER DOCTOR LLC<sup>®</sup>  
COACHING & CONSULTING

Thecareerdoctorllc.com 

312-369-0220 

Chicago, IL 




---

# Table of Content

## **PAGE**

# Table of **CONTENTS**

<b>4</b>	<b>ABOUT US</b>
<b>6</b>	<b>A MESSAGE FROM THE CEO</b>
<b>8</b>	<b>OUR METHODOLOGY</b>
<b>10</b>	<b>PACKAGES</b>
<b>12</b>	<b>THE PROCESS</b>
<b>14</b>	<b>THE STATS</b>
<b>15</b>	<b>OUR TEAM</b>
<b>16</b>	<b>CORPORATE TRAINING PROGRAMS</b>
<b>17</b>	<b>IMPACTFUL PROGRAMMING</b>





## About Us



**W**elcome to the home of The Career Doctor, LLC, a sanctuary for professional growth led by Jacquleen, PhD candidate, an Award-Winning ICF Executive Career, Leadership, and Group Coach. Passionate about igniting change, Jacquleen and her team excel in driving organizational excellence through coaching, leadership training, and corporate partnerships.

In the realm of executive and group coaching, Jacquleen finds fulfillment in empowering professionals to pursue passions with informed decision-making. As the force behind our boutique agency, she offers a spectrum of services, including 1:1 Coaching, Group LinkedIn Branding, Corporate Leadership Training, Early Career Workshops, Minority Women's Group Coaching, Corporate Group Coaching, Resume and CV Support, Interview Strategy, Entrepreneurship Coaching, and more. Jacquleen's unique ability lies in helping individuals uncover genuine passions, crafting personalized paths to success. Welcome to The Career Doctor, where every service is a stepping stone to your professional zenith.

# Coaching is our Love Language.

# WE LOVE WHAT WE DO

We love what we do because every day presents an opportunity to make a meaningful impact on individuals and organizations. Our passion for coaching executive clients and driving leadership development stems from a genuine belief in the transformative power of insightful guidance and skillful mentorship. By fostering a collaborative and growth-oriented environment, we empower leaders to unlock their full potential. The joy we derive from witnessing personal and professional breakthroughs is the driving force behind our commitment to excellence. In each coaching session and leadership development initiative, we relish the chance to contribute to the success stories of those we have the privilege to work with.

Nestled at the core of our passion for Executive ICF Coaching is the extraordinary journey led by Forbes Coaches Council Member, and Chief Coach Jacquelleen, affectionately known as the "Career Doctor," and her dynamic team of coaching partners. Jacquelleen, with her unparalleled expertise and intuitive coaching acumen, and tech-forward leadership takes the helm, guiding individual leaders, professional groups, and corporations through the "I.T.V. CORE" (Intentionality, Trust, Value - Co-Creative Outcomes, Results, and Empowerment) Framework which is a transformative process for clients. Her commitment to excellence is mirrored by her team, a group of dedicated coaching partners who bring diverse perspectives and specialized skills to the table. Together, they create a synergistic force that elevates leadership to unprecedented heights.

Jacquelleen's coaching is a personalized experience, a tailored prescription for success, meticulously designed to address the unique needs of each individual and team. As the Career Doctor, she diagnoses challenges, prescribes solutions, and administers a potent blend of inspiration and strategic guidance. Her team, like trusted allies, complements her efforts, ensuring a comprehensive and holistic

"Jacqueleen is an AMAZING mentor and coach. Her knowledge about career strategy and the corporate landscape is among the best. With her guidance, I made a shift in my professional career and I know it could NOT have been done without her. Grade A service!"

**Digital Product Manager**

"As a DEI executive leader and attorney in the pharmaceutical/healthcare industry, I found Crittle's knowledge, expertise and passion for HR, DEI and justice extremely valuable as we worked to identify organizations with the right corporate culture and mission where I could thrive and reach my career goals. I highly recommend the Career Coach!"

**SVP, DEI & Head of Employee Strategy & Accountability**

# WHAT OUR CLIENTS SAY



I want to say thank you so much for the partnership over the last 5 months! Your insight, feedback, and coaching was exactly what I needed to help prepare me and challenge me for this new role. I have appreciated your questions to get me to think more, your ideas on how I can be more effective as a leader, and your insight on leadership mindset. It has been an absolute pleasure.

**SVP Strategy Growth & Marketing**



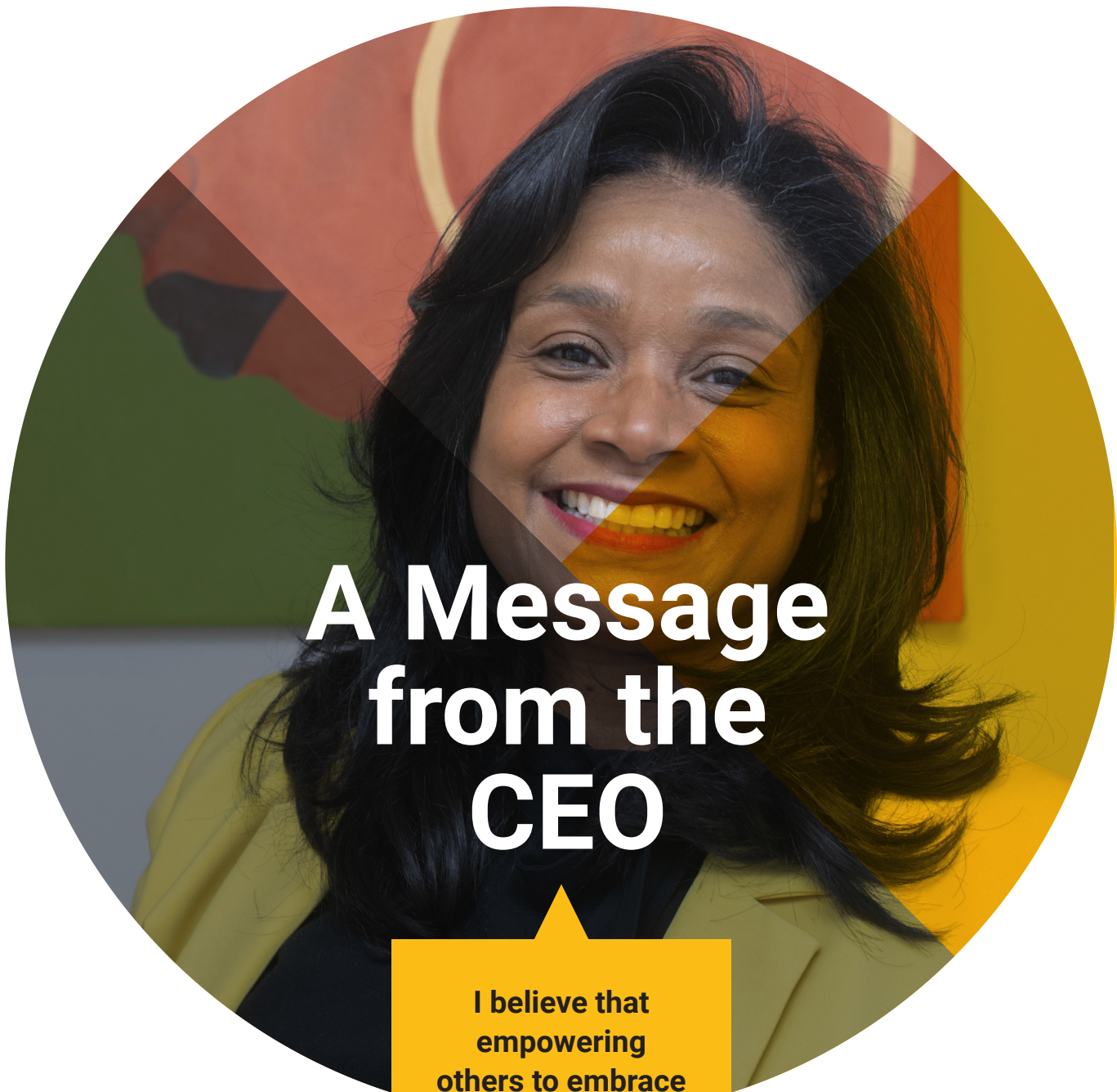
Jacquelleen is the ideal partner for self-transformation. She is direct, empathetic, and pragmatic in her coaching. Her ability to bring her experiences to bear is a huge benefit; they are such a plus. Very few people can create positive momentum, Jacquelleen can create that in spades.

**Chief Information & Data Officer**



I heard rave reviews; what I found was much more; a phenomenal coach that allowed me to stay at the forefront of my career goals. The Career Doc is attentive and wise in all things career related.

**VP Talent Management**



# A Message from the CEO

I believe that empowering others to embrace their passion, discover their purpose, and unleash their superpowers is the key to unlocking a world of limitless potential.

**Jacquleen Crittle**  
*MS, LSS, ACC*



**A**s we navigate the currents of an ever-shifting economy and a dynamic job market, I am invigorated by the challenges that lie ahead. In the face of volatility, our commitment to empowering individuals to not only weather storms but also to thrive in their professional journeys has never been stronger.

A recent study by the International Coach Federation (ICF) highlights the undeniable impact of coaching on personal and professional growth. The numbers speak for themselves—a remarkable 70% improvement in work performance, an 80% boost in self-confidence, and a 73% enhancement in relationships for individuals who embraced coaching. This reinforces our belief that coaching is a transformative journey, and at The Career Doctor, LLC, it is a journey centered around you.

Our Chief Coach, Jacquleen, stands poised at the forefront of this transformative experience. Her dedication to tackling the challenges posed by the volatile economy and job market is unwavering. Whether you are navigating a new career direction, seeking elevation in your current role, striving for work/life balance, or even a simple resume refresh, our services are designed to meet your unique needs.

**Intrinsic Value™ is the flagship proprietary program offered by The Career Doctor, LLC, designed to empower participants to discover their Ikigai—their unique reason for being—by aligning their careers and personal lives with what truly matters. Through this alignment, participants experience greater fulfillment and sustained motivation in both their professional and personal journeys. Along with fostering personal growth, Intrinsic Value™ offers exclusive opportunities to network with thought leaders across**

the nation. The program also features hands-on storytelling practice, guided by a distinguished Toastmaster, utilizing custom storytelling flashcards to help participants craft and share their unique stories effectively.

*“Understanding your own value enhances your confidence and assertiveness, making you more likely to pursue challenging opportunities and negotiate effectively. This self-awareness is key to job performance and career progression.”*

**(Metrics Leader)**

One of our proudest achievements is the creation of the Harmony Hive—a testament to Jacquleen’s ingenuity in fostering growth, connection, and empowerment, particularly for African American leaders. This initiative not only imparts knowledge but sets the stage for a future marked by resilience, excellence, and a harmonious balance in both personal and professional realms.

**As we embark on this journey together, let us embrace the power of intentional coaching, knowing that it has the potential to shape not just careers, but entire lives. Here’s to a future defined by growth, connection, and unwavering empowerment.**

Best regards,

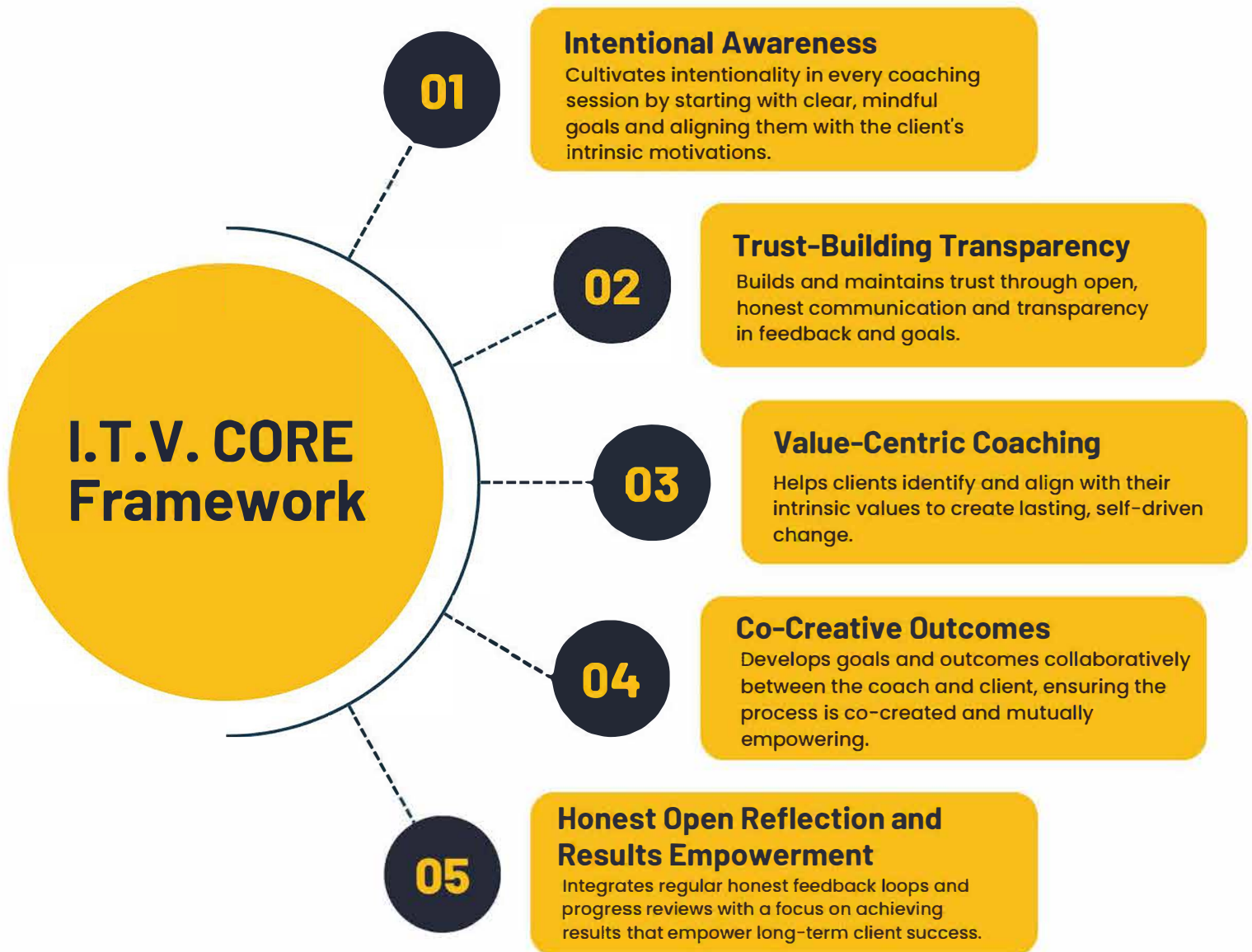
**Jacquleen Crittle, MS, LSS, ACC  
(Ph.D. Candidate) CEO, The Career Doctor, LLC**



**Over the last decade, Jacquleen has found her greatest professional fulfillment with executive coaching and group coaching as her “love language”.**

It’s her role to empower corporate professionals and young adults to pursue their passions while making informed decisions about their career and life trajectories. Many refer to her as “The Career Doctor” because of her unique ability to help people dive deep within themselves to uncover their genuine passion and create a path and plan to get there.

# Our Methodology







**EXECUTIVE,  
MIDLEVEL AND  
EARLY CAREER  
COACHING**



**ORGANIZATIONAL  
LEADERSHIP  
DEVELOPMENT  
TRAINING**



**GROUP  
COACHING**



**ERG EVENTS &  
KEYNOTES**



**BEHAVIORAL  
ASSESSMENT  
COACHING**



**RESUME, CV,  
BIO CREATION &  
LINKEDIN  
PROFESSIONAL  
BRANDING**

# Packages

## 1:1 EXECUTIVE COACHING

Starting at \$500/hour

This fee applies to one-on-one coaching sessions with the Coach, with each session lasting one hour. It covers personalized guidance, support, and accountability tailored to the Client's specific needs and goals. Payment is required in full prior to the commencement of services.

### 1:1 Coaching Bundles:

- 4 sessions
- 6 sessions
- 8 sessions
- 10 sessions
- 12 sessions

## CORPORATE TRAINING

Starting at \$3800/Day

This fee covers corporate training sessions delivered by the Coach.

The daily rate includes the provision of tailored training content and materials.

Additional fees may apply for travel and lodging, if required.

## GROUP COACHING

\$2500 per person -  
8 week program

This fee covers eight 90-minute group coaching sessions for a maximum of 8 participants in each GROUP. Pricing includes DISC assessment to ensure group alignment, survey, group welcome kit, group activities, discussions, and shared learnings to facilitate personal and professional growth directed by an ICF coach.

## Supplemental Offerings

- Pricing does not include travel for in-person culminating weekend.
- 35 Minute Consultations
- Resume/ CV
- Bios
- LinkedIn Enhancement
- Career Catalyst Kit: Customized ATS Formatted Resumes or CV's, Bios, LinkedIn Enhancement, Interview Prep, Contract Negotiations
- DISC Assessment - Leadership, Career, or Self reporting + Coaching.

# We Provide

**A**ccording to a study by the ICF, individuals who received coaching saw a **70% improvement in work performance, 80% improvement in self-confidence, and a 73% improvement in relationships. Coaching works because it is all about you.**



## **CAREER & LEADERSHIP COACHING**

Our ICF-certified coach will help you identify and achieve your professional goals.



## **HARMONY HIVE GROUP COACHING**

Our ICF-certified coaches lead small groups of women of color to enhance work-life balance, leadership strategy, public speaking, and overall life strategy.



## **PROFESSIONAL ORGANIZATION PARTNERSHIPS**

Our ICF-certified coach will help your organization enhance professional development and leadership skills.



## **RESUME & LINKEDIN SME**

Our ICF-certified coach will provide expert guidance to help you optimize your resume and LinkedIn profile for maximum impact.



## **EMERGING TALENT COACHING**

Our ICF-certified coaches help emerging talent build a strong foundation for long-term success and fulfillment in their careers.



MASTERCLASS

## **MASTERCLASSES**

Our **award-winning trainer** provide immersive learning experiences on a variety of personal and professional development topics.

# The Process



1

**Begin** your transformative journey with The Career Doctor, LLC by scheduling an appointment through Calendly with our lead coach, ensuring a personalized and convenient start to your coaching or training experience.



2

**Upon** scheduling, thoroughly review the comprehensive scope of work, or review of the invoice along with completing the online assessment that provides valuable insights into your professional development needs.





3

**Facilitate** a seamless engagement process by promptly settling a 50% down payment via our invoicing system. Engage with our customized portal to access a wealth of resources tailored to your unique career



4

**Complete** your engagement by settling the balance in full within 30 days of service completion or at the time of final services rendered, solidifying a collaborative and successful partnership with The Career Doctor, LLC.



# The Stats

## Group Coaching:

### CHIEF

Statistical Feedback for Group Coaching: Client Satisfaction Surveys

#### All-Time Data (CHIEF):

- Average Client Satisfaction Score (CSAT): 4.80
- Percentage of 5-Star Scores: 91%

#### Biannual Data (CHIEF):

- Biannual Client Satisfaction Score (CSAT): 4.84
- Percentage of 5-Star Scores: 94%

These results from CHIEF highlight consistently high client satisfaction, with the biannual data showing an improvement in both average CSAT and the proportion of 5-star ratings compared to the all-time data. This trend points to growing satisfaction among clients during the latest reporting period.

## Women In Sports & Events (WISE)

Statistical Feedback for Group Coaching: Client Satisfaction Surveys

#### All-Time Data (WISE):

- Average Client Satisfaction Score (CSAT): 4.88
- Group Members Surveyed: 33
- Percentage of 5-Star Scores: 87.88%
- Percentage of 4-Star Scores: 12.12%
- Likelihood to Recommend: The overwhelming majority expressed a high likelihood to recommend the group coaching experience.

## Harmony Hive 2024 Stats

Statistical Feedback for Group Coaching: Client Satisfaction Surveys (Harmony Hive African American Group Coaching Collective)

#### All-Time Data (Harmony Hive):

- Average Client Satisfaction Score (CSAT): 5.00
- Group Members Surveyed: 7 out of 8
- Percentage of 5-Star Scores: 100%
- Likelihood to Recommend: All participants endorsed the program as a positive return on their investment and highly encouraged others to enroll.

# Our outcomes, drive personal & organizational impact.

## Emerging Talent:

Jacqueleen's transformative leadership has sculpted an inspiring narrative—a 13-year saga where she coached, mentored, and led an organization of 1300+ African American young women and men. In this remarkable journey, she achieved a quantifiable triumph, guiding 80% female participants, ensuring 100% college acceptance, with a resounding 95% attendance and an impressive 85% graduation rate. Jacqueleen's legacy echoes in the corridors of postgraduate education (including Ivy League, big ten, and top-ranking institutions) and flourishing professional careers—a testament to her unwavering commitment and extraordinary impact.

## People Leader Professional Development:

### CASE STUDY: *Leadership Transformation Training Program*

### Objective:

A mid-size organization aimed to facilitate leadership transformation among its people leaders by addressing key areas of development, including Leadership Presence, Courageous Conversations, and Growth Mindset. The goal was to enhance leadership effectiveness through a comprehensive seven-month training program.

### Resolution:

The organization conducted a case study involving 237 organizational leaders to evaluate the impact of the training program. The program featured small group, instructor-led training sessions that included:  
Career Doctor Instructor Facilitation: Expert-led instruction tailored to real-world leadership challenges.  
Group Breakouts: Collaborative discussions to reinforce learning and foster peer support.  
Scenario-Based Role-Play: Practical role-play sessions simulating real-world situations to improve decision-making and communication skills.  
Post-Session Activities: Reinforcement exercises and follow-up activities to ensure long-term retention of key concepts.

### Results:

Leadership Training Effectiveness Rating: 4.87 out of 5 stars.  
Effectiveness/Satisfaction with Behavioral Communication Coaching and Team Development: 97%.  
The data from this case study underscores the program's success in transforming leadership behaviors and improving communication within teams. Leaders reported significant improvements in leadership presence, engagement in courageous conversations, and adoption of a growth mindset.

# Our Team



## Cassandra

*DTM, PDD, CVP*

With an illustrious 25-year Toastmasters journey, she holds two Distinguished Toastmaster titles and led the acclaimed club WAO to secure numerous district awards, including "Toastmaster of the Year," "Excellence in Program Quality," and a prestigious nomination for the "2022 Presidential Citation Award." In 2023, she further distinguished herself as an accomplished author..



## Sarah

*MSc, MBA, PCC*

A seasoned veteran with 20 years of experience in executive and leadership development coaching, she specializes in guiding both senior and aspiring leaders. Her expertise lies in helping individuals tap into and amplify their leadership potential, all while fostering deeper connections and a greater sense of joy in their lives. With a rich background in brain studies, boasting a BSc in neuroscience and an MSc in biomedical engineering, her inspiration springs from the marvels of our intricate minds.



## Toby

*Design & Media Specialist*

Originally a graduate of Chemical Engineering born in Lagos, Nigeria, Toby is our no. 1 go-to video editor and designer. He has over 8 years of experience as a professional video-editor and cinematographer. He is incredibly creative and very adept in his craft.

### Places The Career Doctor has coached individual executive clients:

CHIEF | WISE | NAMIC | HRTS | NBA | NFL | NHL | WNBA | MLB | MLS | ESPN | WNBA | BULLS | AEG | ROOTS | JNJ | US Pharamocia | JLL | Revlon | Disney | Netflix | Comcast | IPG | Girls. Inc | Thermo Fisher | Cornell | Amazon | Walmart | AP | Humana | Gallagher | Accenture | Agility Health | LMU | Peloton | Bon Secour | Children's Adocacy Center of Texas | African American Chamber of Commerce | Reddylce | ABT | Heineken | Morgan Stanley Advent Health | United Healthcare | Pepsico | McGraw Hill | Google | Fox Sports | BlueCross Blue Shield | Ulteig | Carnegie Learning



THE CAREER DOCTOR LLC®  
COACHING & CONSULTING

# CAPABILITIES STATEMENT



**Sarah**

MSC, MBA, ICF-PCC



**Jacquleen**

Chief Executive Officer  
MS, LSS, ACC



**Brenda**

ACC, 3x DTM

## Company Overview

**DUNS:** 111423258

**SIC CODE:** 874-8000

Career Doctor LLC is a premier executive coaching and career development firm dedicated to enhancing leadership presence, fostering career growth, and facilitating workforce reintegration across all professional stages. We specialize in empowering executives, mid-career professionals, and individuals returning to the workforce through tailored, results-driven coaching programs.

Our programming is designed for mid-to-senior-level executives, early-career professionals, and retirees re-entering the workforce. We pride ourselves on offering innovative, transformative solutions, including our Landmark Intrinsic Value Program for women leaders and Human-Centric Training—an evolved approach to traditional diversity training. Additionally, we offer Returnship Programs for organizations seeking to re-engage retired executives in fractional or consultancy roles, bringing seasoned expertise back into the workforce.

### CORE COMPETENCIES

- Executive Coaching & Behavioral Assessments
- Leadership Presence Training for Executives
- Landmark Intrinsic Value Program for Women Leaders
- Human-Centric Training: Advocacy to Action
- Early Career Odyssey Development Programs
- Returnship Training for Organizations
- Group and 1:1 Coaching

### Our Partners

- CHIEF
- LuxNomad
- Women In Sports & Events (WISE)
- The Mom Project
- Hollywood, Radio, Television & Film Society (HRTS)
- Chicago Public Schools
- Netflix
- McKesson





## KEY OUTCOMES

### 1. Leadership Confidence:

- 60%+ increase in leadership confidence across all career stages.
- 237 leaders achieved a 4.87/5 rating and 97% satisfaction in communication and team development coaching.

### 2. Expanded Engagement:

- 30% increase in organizational reach across generations:
- 98 executives enhanced leadership skills (4.80 CSAT, 91% 5-star ratings).
- 30 early-career professionals improved leadership, college acceptance, and readiness.
- 30 returning seniors achieved a 98% job placement within two months.

### 3. Employment Success:

- Maintained a 98% job placement rate within two months.

### 4. Skill Development:

- 75% of participants improved digital literacy, leadership, and communication.

### 5. Coaching Impact:

- 98% effectiveness for group and 1:1 coaching.

## FIVE IMPACTFUL DIFFERENTIATORS

**1. The Landmark Intrinsic Value™ Program** – A transformative leadership development experience that elevates women leaders through executive presence mastery, strategic influence, and confidence-building, empowering them to excel at the highest levels.

**2. Advocacy to Action: A Human-Centric, Unbiased Training Approach** – A progressive alternative to diversity programs, this initiative champions real-world impact by integrating emotional intelligence, inclusive leadership, and actionable strategies that drive meaningful and sustainable workplace transformation.

**3. Executive Returnship & Career Acceleration** – A specialized initiative that reintegrates seasoned executives into high-impact roles, offering businesses fractional leadership, consultancy, and strategic advisement solutions driven by proven expertise.

**4. EngageX™ The Future of Multigenerational Communication**  
A revolutionary AI-powered platform that enhances communication strategy, ensuring leaders, professionals, sales teams, and entrepreneurs connect and engage effectively across generational divides with precision and influence.

**5. Career Project USA : A Mission-Driven 501(c)(3) Initiative**  
A dedicated nonprofit arm providing subsidized and no-cost career services to individuals facing hardship, ensuring access to transformational career coaching, job placement, and professional development regardless of financial barriers.



## Data Collection and Impact Measurement

At Career Doctor LLC, we continuously track program impact through pre- and post-coaching surveys, participant feedback forms, employment verification, and engagement analytics. Our data-driven approach focuses on leadership development, job placement success, multigenerational skill enhancement, and overall client satisfaction.

Regular quarterly evaluations ensure our programs remain aligned with client needs and market trends, fostering measurable growth and sustainable career advancement.



### Jacquleen Crittle

MS, LSS - ICF ACC, PCC (4/25)  
Forbes Coaches Council  
Chief Executive Officer | Board President  
Lead Coach



*Intrinsic  
Value*™



# WOMEN'S HISTORY MONTH

SAT'S

11:00 - 3:30 PM CST

ZOOM

MARCH  
TO  
MAY

\$175

1ST 300 WOMEN - WORKBOOK +  
FLASHCARDS INCLUDED: REG \$599

Join us as we embark upon a groundbreaking research study led by Executive ICF Coach Jacquleen Crittle, MS, in collaboration with Lead Research Dr. Muriel Adams, our research team, and a 3X DTM alongside 300 female professionals mid-level to C-suite focused on Intrinsic Value™.

Spend an unforgettable afternoon with extraordinary female leaders from diverse industries across the globe. Together, we will explore your intrinsic value, craft powerful “why” statements, and develop a commanding leadership presence.

Master the art of storytelling to inspire, motivate, and transform those you lead. Build lasting friendships in a safe, supportive space dedicated to your professional and personal growth. Leave with confidence, clarity, and a guiding compass to navigate your career with purpose.

This is your opportunity to be part of something truly transformative—don't miss it!



Trusting Your Journey to Be More, Want More, Do More

# CAREER PROJECT USA PAY IT FORWARD FUNDRAISER

20 EARLY DONORS WILL BE THE LUCKY RECIPIENTS OF FREE SUITE TICKETS TO THE MARCH 29TH BULLS VS MAVERICKS GAME!



**29TH**  
GAME DAY  
MARCH, 2025

**WE NEED YOUR HELP TO ENSURE THAT EVERYONE HAS ACCESS TO THE TOOLS & OPPORTUNITIES TO SUCCEED.**

**SUPPORT WITH A DONATION AMOUNT OF \$50 UPWARDS**

HELP US REACH OUR GOAL **\$65000** MARCH - MAY 2025



### Tax Deductible Donation

Consider multiplying your impact through a tax-deductible matching donation.



### Set a Recurring Donation

Together, we can create lasting change!



### Partner with Us

Or attend a fundraising event!

**PAY IT FORWARD**



MORE INFO AT: [thecareerprojectusa.org](http://thecareerprojectusa.org)

